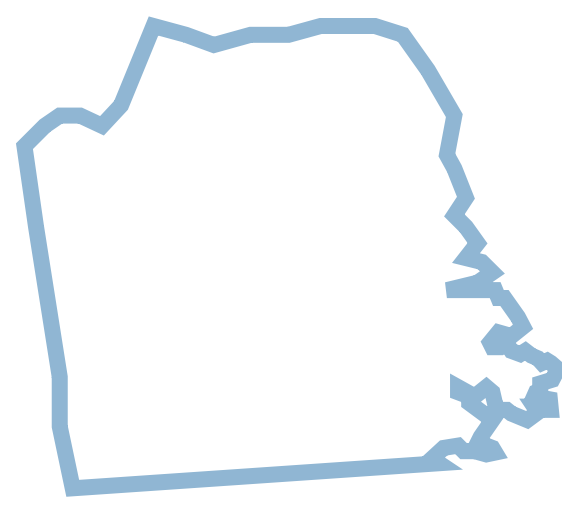


Case Studies: California Counties

San Francisco



Population: 884,363 (2017)

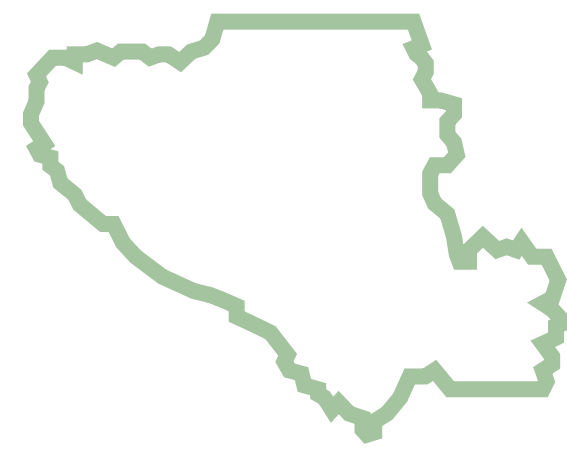
Urban?: Yes

Working Group?: Yes

External Data
Partner?: Yes

Probation Runs
Pretrial?: No

Santa Clara



Population: 1,938,000 (2017)

Urban?: Yes

Working Group?: Yes

External Data
Partner?: No

Probation Runs
Pretrial?: No

Del Norte



Population: 27,470 (2017)

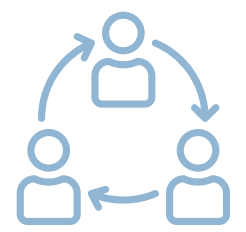
Urban?: No

Working Group?: Yes

External Data
Partner?: No

Probation Runs
Pretrial?: Yes

Key Features



1 | Quarterly Pretrial Stakeholder Working Group

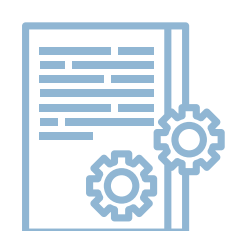
Build mutual understanding and consistency on risk assessment

Regular review of judge concurrence rates

Resources to validate PSA

Update Decision Making Framework

Train new staff



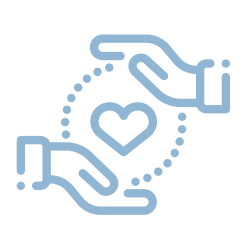
2 | Collaboration with the California Policy Lab

CPL: Independent academic agency

De-silos data across pretrial agencies

Builds dashboards to allow easy visualization, analysis and reporting

Helps SF be ready for SB-36



3 | Nonprofit-run Pretrial Services

Wraparound case management

Holistic needs assessments

Peer-based services: Many staff have been through the system

Nimble enough to adapt to changing populations

Special grants (ie HIV, homeless populations) to increase effectiveness



1 | Investment in Risk Assessment Validation

Shifting from VPRAI to PSA after careful analysis

Well-defined metrics and regular review

High judge concurrence rate with risk assessment recommendations



2 | Bail Release Group

Dedicated to pretrial

Includes community partners in domestic violence, immigrant rights, racial equity & tech advocacy



3 | POPS

In-house pretrial data management system

Built and maintained by county IT department

Dashboards with key daily performance metrics

Ability to validate risk assessment and analyze overall outcomes

Built with non-open source software



1 | Small and Scrappy Organization

One pretrial coordinator handles everything, including pretrial case management, risk assessment, data management and analysis, court advocacy, and reminders

Most processes are done manually or with spreadsheets

Time consuming to run rap sheets, interview clients, manage data and records, etc.



2 | Lack of Funds for Case Management System

Trial run with Probation Dept's case management and data system

Vendor wanted to sell the entire system when only certain functions were needed

Requested fixes were never made

Assessment process way too slow - can't keep up with jail population



3 | Underresourced Pretrial and Jail Overcrowding

Small counties cannot afford costly case management systems and technical staffing

Pretrial risk assessment is cut out of the equation when it doesn't have enough resources to operate

Del Norte jail forced to make release determinations without risk assessment